



TEL: (675) 3121581  
AFTN: AYPMYNYX  
FAX: (675) 3121593  
Email: ais@pngairservices.com.pg

AERONAUTICAL INFORMATION SERVICES  
P.O.BOX 273  
BOROKO, NCD 111  
PAPUA NEW GUINEA

## AIP SUPPLEMENT

AIRAC  
4/2013  
21ST MARCH

---

**EFFECTIVE DATE: 02 MAY 2013**

### **CHANGES IN CLOUDBREAK PROCEDURES - TARI (AYTA) AERODROME**

#### **1. PURPOSE**

- 1.1 The purpose of this AIP Supplement is to provide details of the new CLOUDBREAK Procedures for Tari (AYTA) Aerodrome.

#### **2. EFFECTIVE DATE**

- 2.1 This AIP Supplement will become effective on 02 May 0000 UTC.

#### **3. NEW CLOUDBREAK PROCEDURES**

- 3.1 The new changes are related to the following: Holding pattern, missed approach and minima (Refer attached chart).

#### **4. PLANNED MBZ FOR TARI**

- 4.1 This is to notify in advance of the planned established MBZ that will cover Tari region. Details to be confirmed.

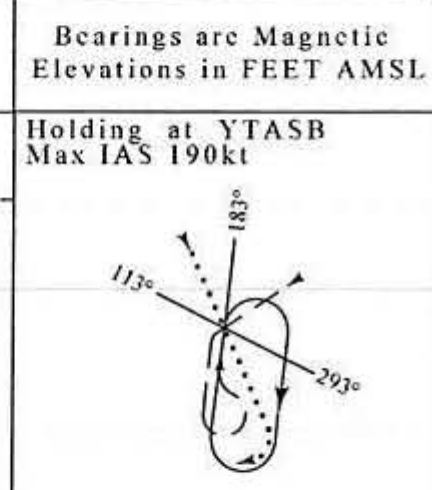
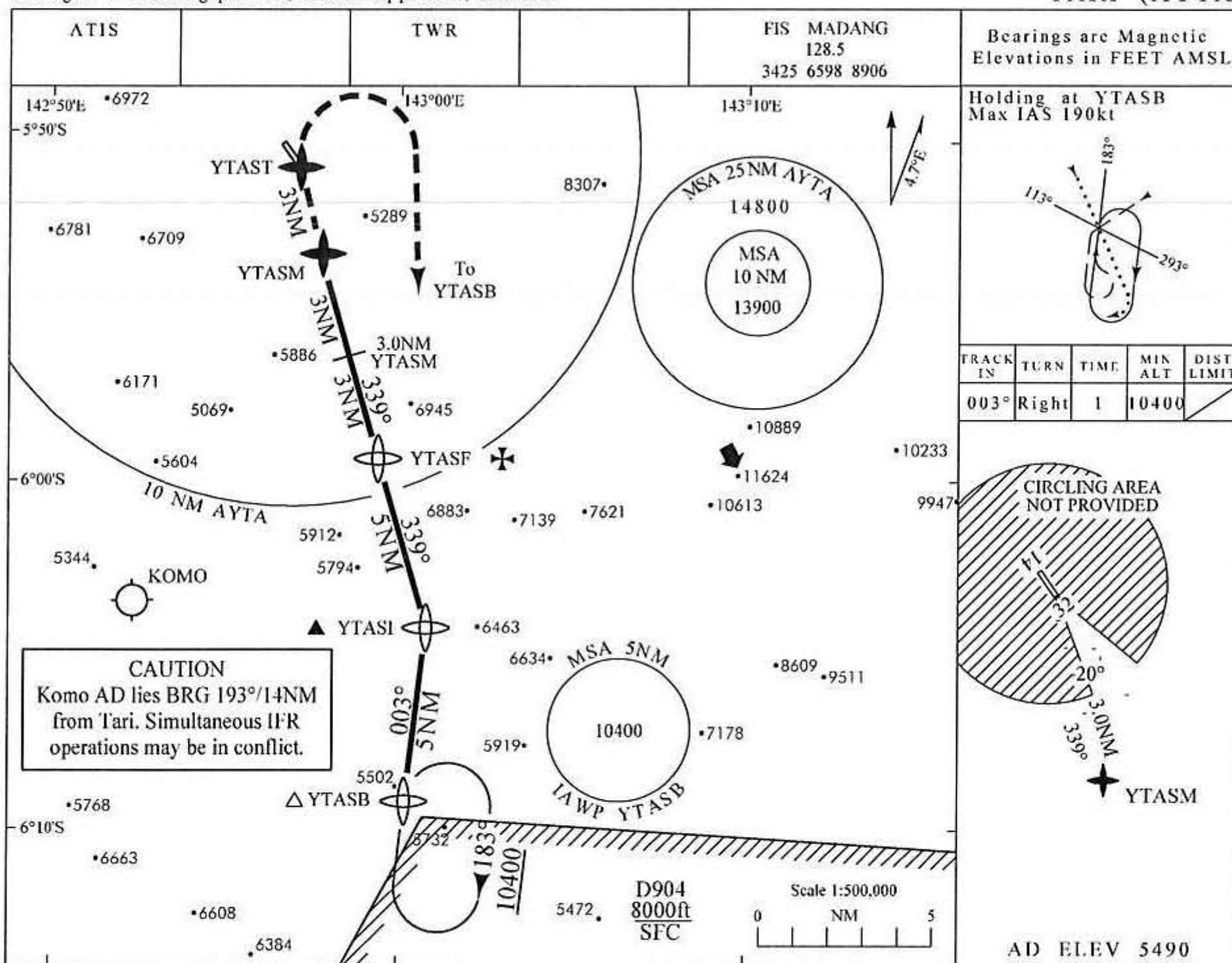
#### **5. CANCELLATION**

- 5.1 This AIP Supplement will remain current until all changes are incorporated in the New Format AIP, Part 3, Aerodromes, AYTA AD 3.24, Chart related to Tari Aerodrome. The following AIP SUP 3/13, and current AIP Flight Supplement IAL, Tari Cloudbreak Procedure dated 6 Sept 2004 are hereby superseded.
-

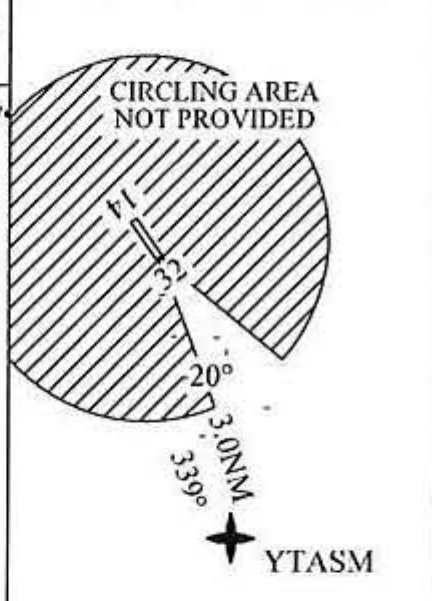
USE QNH

RNAV (GNSS) CLOUDBREAK A TARI (AYTA)

Changes : Holding pattern, missed approach, minima.

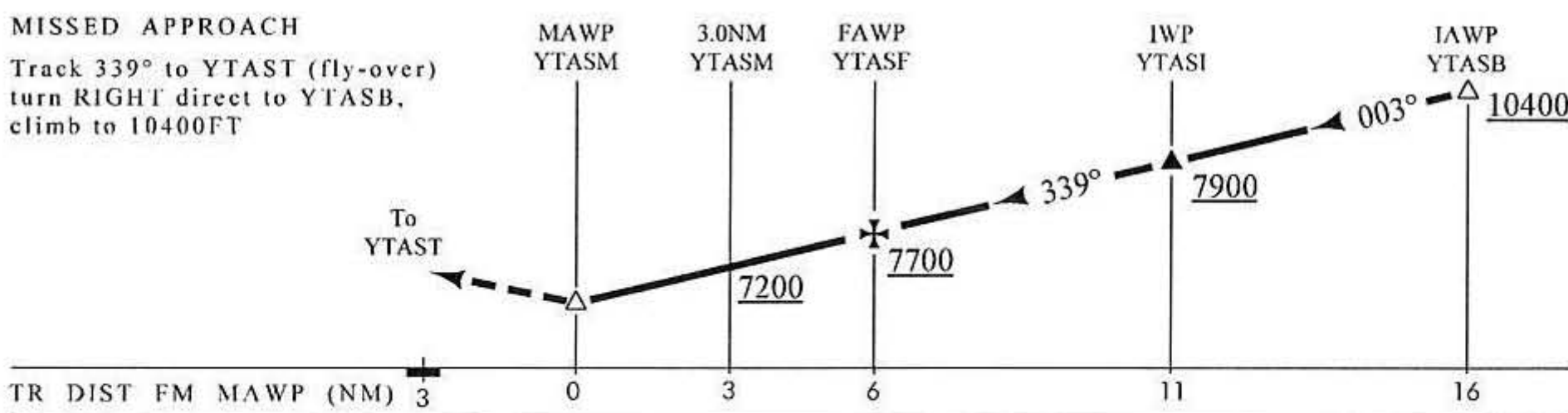


| TRACK IN | TURN  | TIME | MIN ALT | DIST LIMIT |
|----------|-------|------|---------|------------|
| 003°     | Right | 1    | 10400   |            |



MISSED APPROACH

Track 339° to YTAST (fly-over) turn RIGHT direct to YTASB, climb to 10400FT



| CATEGORY   | A                | B | C                |
|------------|------------------|---|------------------|
| CLOUDBREAK | 6770 (1280)-3300 |   | 6770 (1280)-4500 |
| ALTERNATE  | NOT AUTHORISED   |   |                  |

NOTES  
1. Max IAS missed approach 160kt

| NM FM MAWP    | 0   | 1    | 2    | 3    | 4    | 5    | 6    |
|---------------|-----|------|------|------|------|------|------|
| ALTITUDE 3.0° | MDA | 7090 | 7410 | 7730 | 8050 | 8370 | 8690 |